

# Adding the DMAIC Toolbar

Jon Ridgway

Nov. 2011

# The Steps

- Go to “Tools”
- Then “Manage Profile”
- Move “DMAIC” over via arrow
- Click OK
- Verify the toolbar is present. NOTE:
  - It does not want to go on the top Menu position
  - You can move it to where you want it
- Screenshots follow





Session

11/22/2011 10:37:07 AM

Welcome to Minitab, press F1 for help.

Worksheet1 \*\*\*

|   | C1 | C2 | C3 | C4 |
|---|----|----|----|----|
| 1 |    |    |    |    |
| 2 |    |    |    |    |
| 3 |    |    |    |    |
| 4 |    |    |    |    |
| 5 |    |    |    |    |
| 6 |    |    |    |    |
| 7 |    |    |    |    |

Manage Profiles - Manage

Manage | Toolbars

Available profiles

- DMAIC
- Student Version

Active profiles

- MyProfile

> < <<

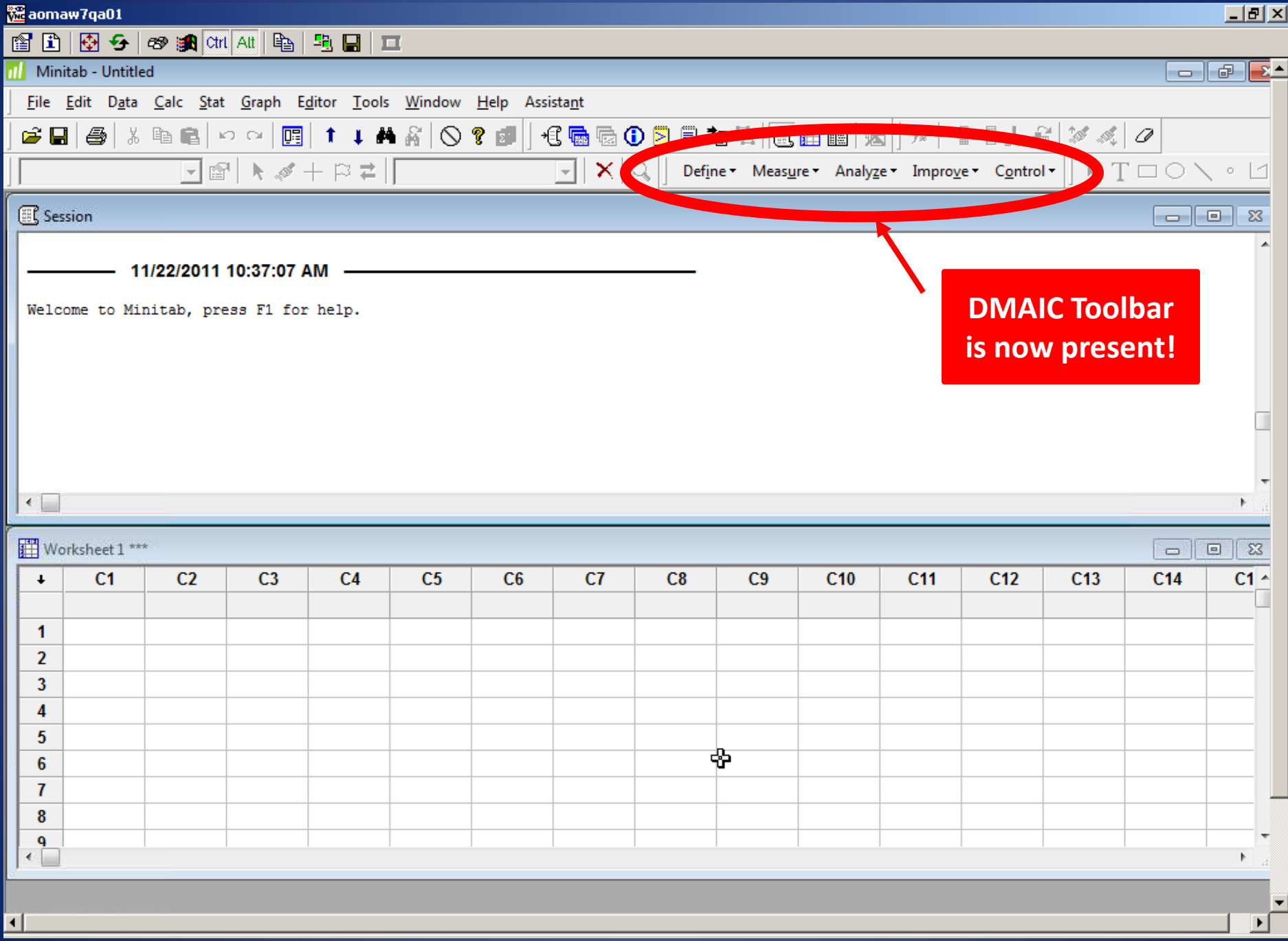
Import... Export...

Help OK Cancel



|  | C11 | C12 | C13 |
|--|-----|-----|-----|
|  |     |     |     |





**DMAIC Toolbar  
is now present!**